

1108

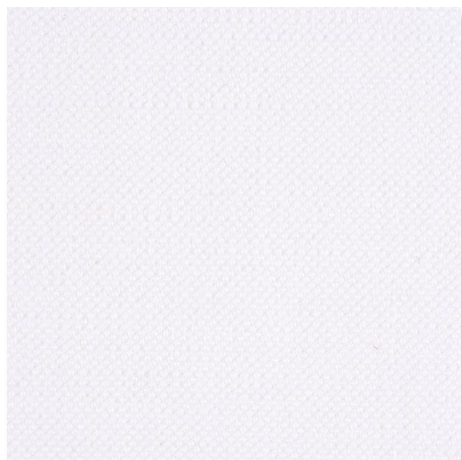
DJAKARTA

1108 DJAKARTA  
STOFF PREISGRUPPE 5

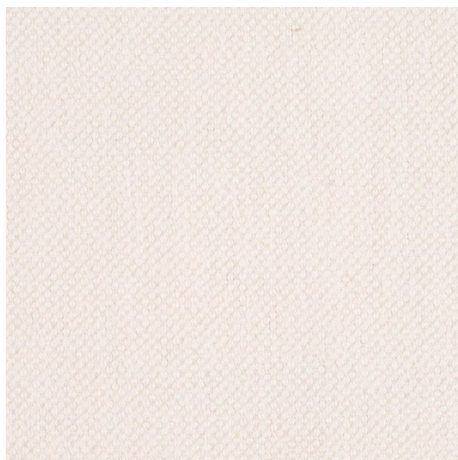
DJAKARTA ist ein flaches Baumwolle-Leinen Gewebe in einer besonders festen Bindung. Dadurch wird DJAKARTA zu einem sehr strapazierfähigen Bezugsstoff aus rein natürlichen Materialien. Die Oberfläche erhält durch die besondere Zusammensetzung aus 63% Baumwolle und 37% Leinen einen fast samtigen Griff. Die umfangreiche Farbpalette lässt fast jede Farbkombination zu.

DJAKARTA is a flat cotton-linen fabric in a firm binding. That makes DJAKARTA an extremely hardwearing product for upholstery made of purely natural materials. The unique mixture of 63% cotton and 37% linen gives the surface of the fabric an almost velvet-like feel. The wide range of different colour-shades allows nearly any combination possible.

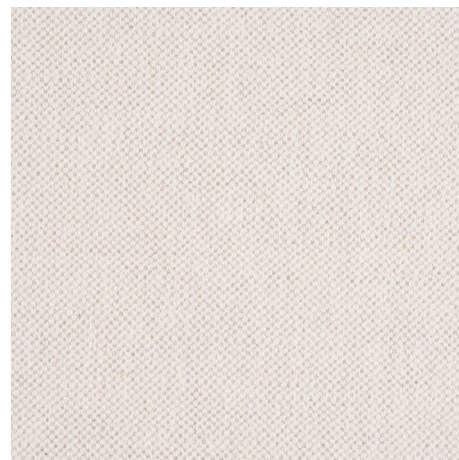
**1108 DJAKARTA  
GRUPPE 5**



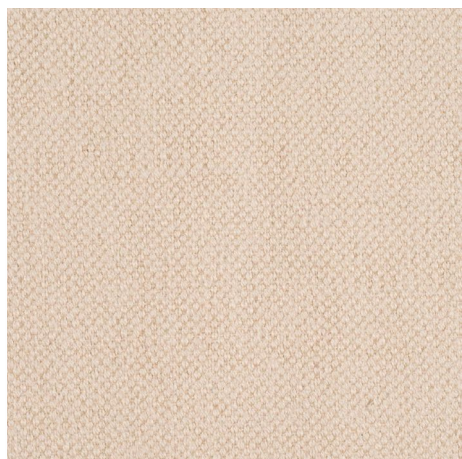
**01 BIANCO**  
1108 DJAKARTA



**03 ÉCRU**  
1108 DJAKARTA



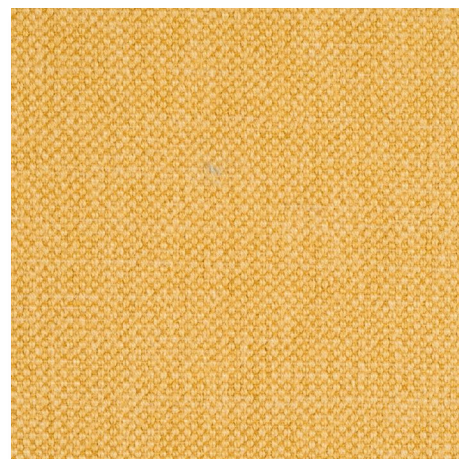
**05 DESSERT**  
1108 DJAKARTA



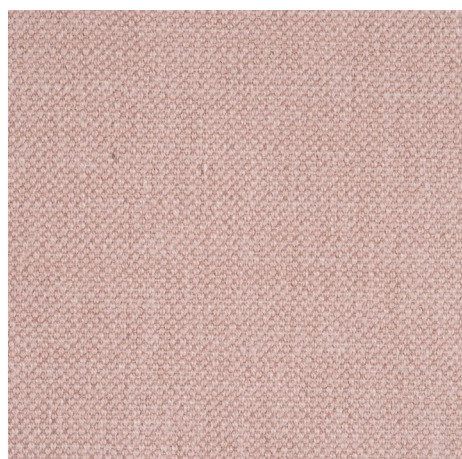
**06 COUNTRY**  
1108 DJAKARTA



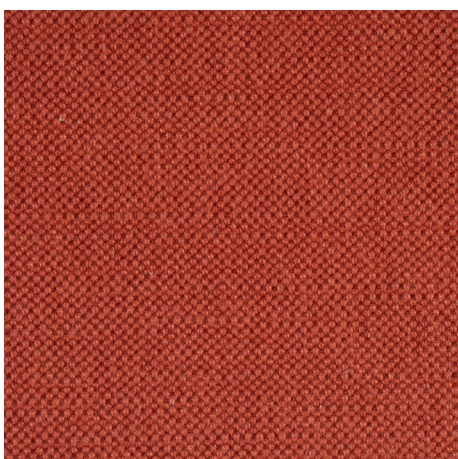
**07 SAND**  
1108 DJAKARTA



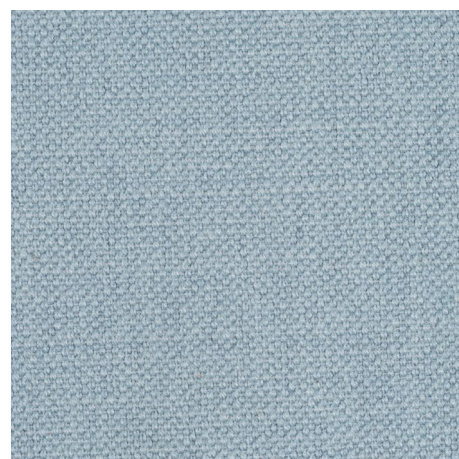
**11 SENF**  
1108 DJAKARTA



**21 BEIGEROSÉ**  
1108 DJAKARTA

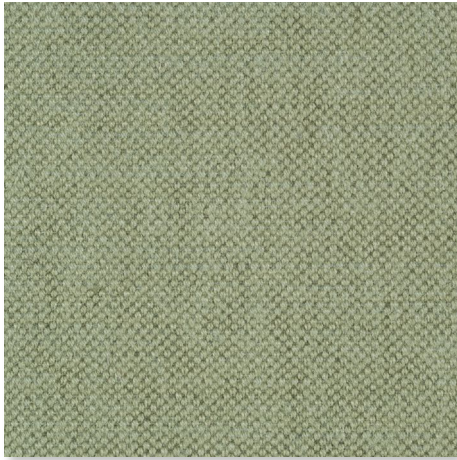


**28 BRIQUE**  
1108 DJAKARTA

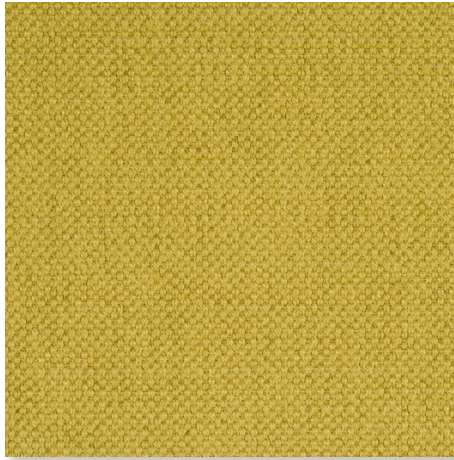


**35 AZUR**  
1108 DJAKARTA

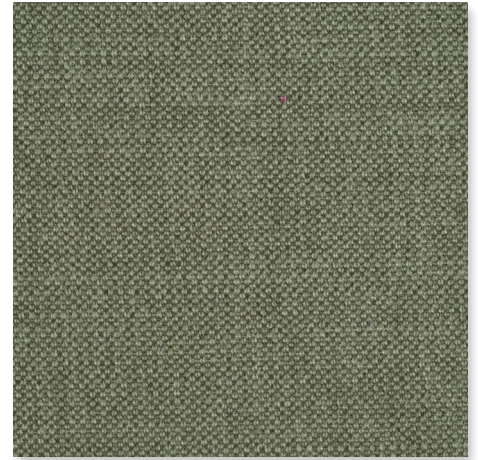
## 1108 DJAKARTA GRUPPE 5



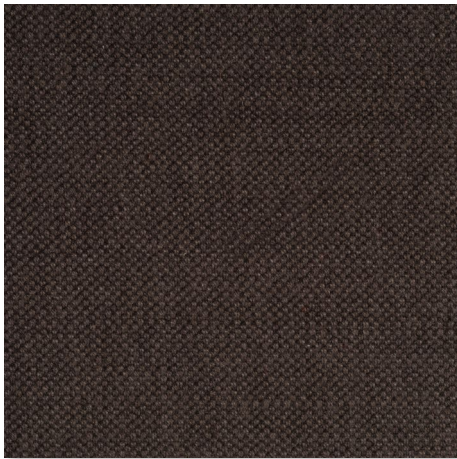
**40 LINDGRÜN**  
1108 DJAKARTA



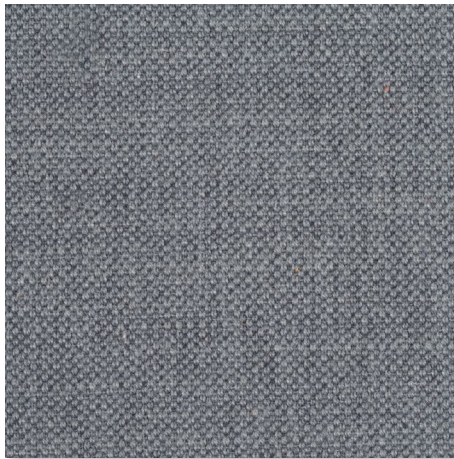
**45 GRÜN**  
1108 DJAKARTA



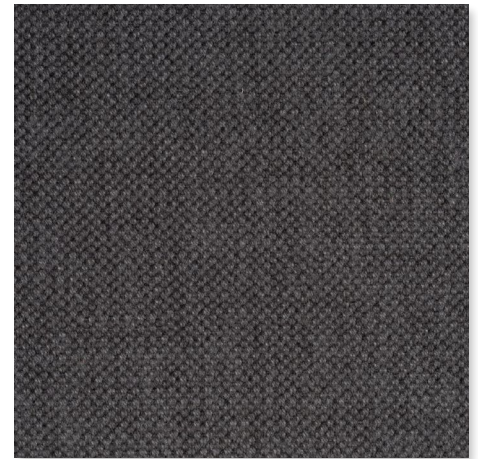
**49 HEU**  
1108 DJAKARTA



**59 MARRON**  
1108 DJAKARTA



**60 ASPHALT**  
1108 DJAKARTA



**68 GRAPHIT**  
1108 DJAKARTA

### 1108 DJAKARTA

Zusammensetzung:  
63% Baumwolle CO  
37% Leinen LI

Breite: 140 cm

Scheuertouren: 32.500

Lichtechtheit: 3 - 5

Reibechtheit: 3 - 5

Pilling: 4

Chemische Reinigung: möglich

### 1108 DJAKARTA

Composition:  
63% Cotton CO  
37% Linen LI

Fabric width: 140 cm

Rubs Martindale: 32.500

Light fastness: 3 - 5

Fastness to rubbing: 3 - 5

Pilling: 4

Dry cleaning: possible