

**CHRISTINE
KRÖNCKE**
INTERIOR
DESIGN

TOUCH ME



TOUCH ME - SHORT PILE
Teppich

Die getuftete Ware verleitet zum Anfassen und Barfuß laufen. Ein haptisches und optisches Highlight mit ausgeprägtem Lüster. Der Wollanteil sorgt für Stand und Bewegung in der Oberfläche. 75 Farben und die Möglichkeit bis zu 3 Farben miteinander zu vermischen erlauben jedes räumliche Farbkonzept perfekt abzurunden.

TOUCH ME - SHORT PILE
Teppich



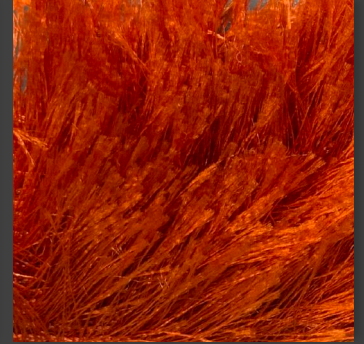
043TM
TOUCH ME



018TM
TOUCH ME



173TM
TOUCH ME



114TM
TOUCH ME



034TM
TOUCH ME



045TM
TOUCH ME



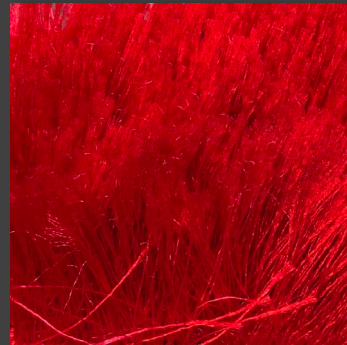
172TM
TOUCH ME



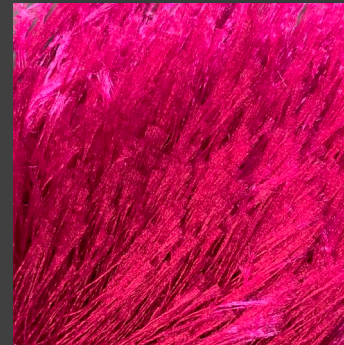
128TM
TOUCH ME



092TM
TOUCH ME



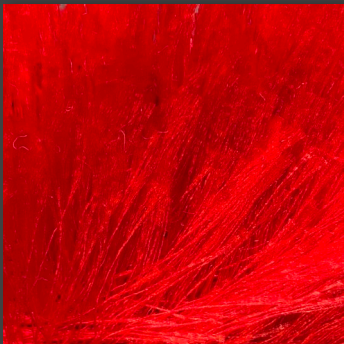
044TM
TOUCH ME



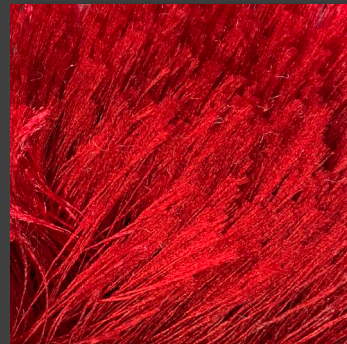
007TM
TOUCH ME



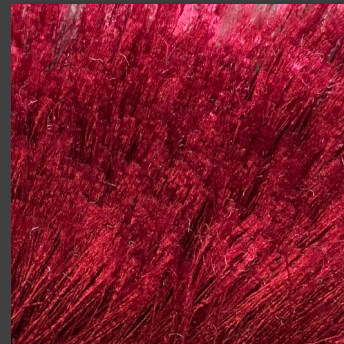
127TM
TOUCH ME



004TM
TOUCH ME



115TM
TOUCH ME

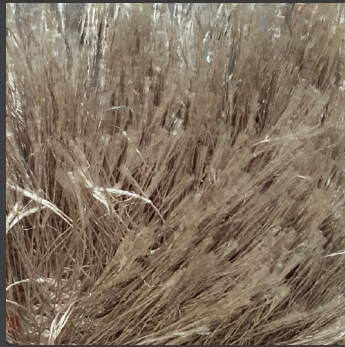


008TM
TOUCH ME

TOUCH ME - SHORT PILE Teppich



085TM
TOUCH ME



069TM
TOUCH ME



033TM
TOUCH ME



176TM
TOUCH ME



079TM
TOUCH ME



097TM
TOUCH ME



089TM
TOUCH ME



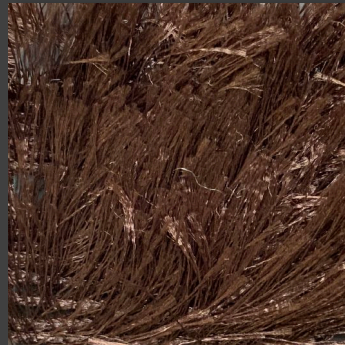
006TM
TOUCH ME



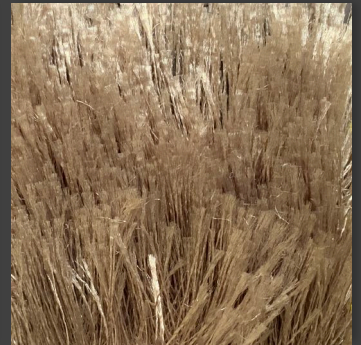
175TM
TOUCH ME



068TM
TOUCH ME



031TM
TOUCH ME



123TM
TOUCH ME



035TM
TOUCH ME



174TM
TOUCH ME



177TM
TOUCH ME

TOUCH ME - SHORT PILE
Teppich



093TM
TOUCH ME



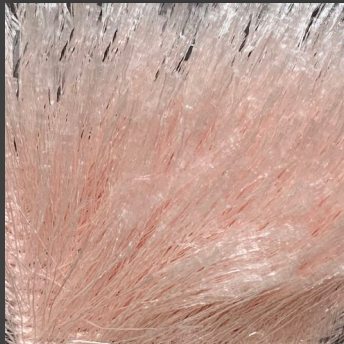
002TM
TOUCH ME



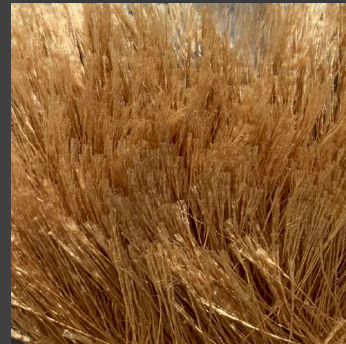
001TM
TOUCH ME



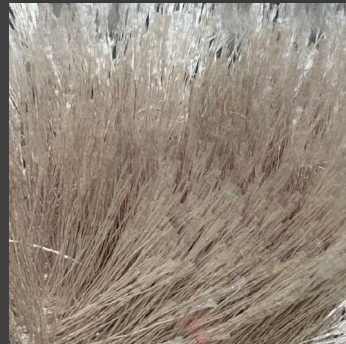
134TM
TOUCH ME



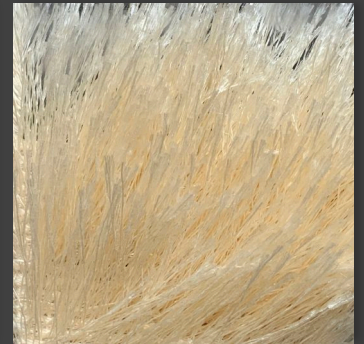
054TM
TOUCH ME



116TM
TOUCH ME



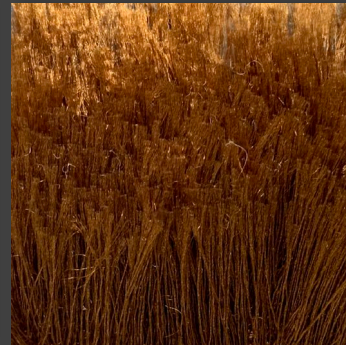
122TM
TOUCH ME



061TM
TOUCH ME



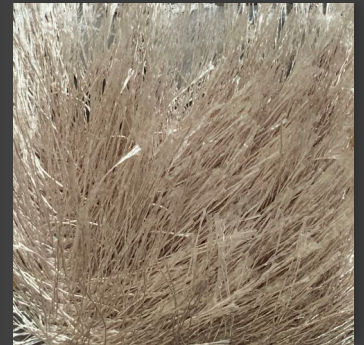
059TM
TOUCH ME



076TM
TOUCH ME



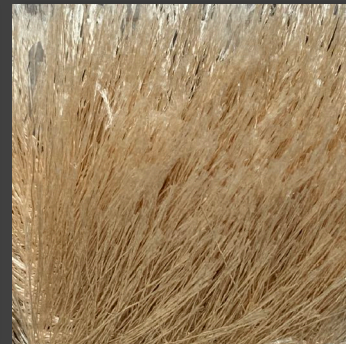
130TM
TOUCH ME



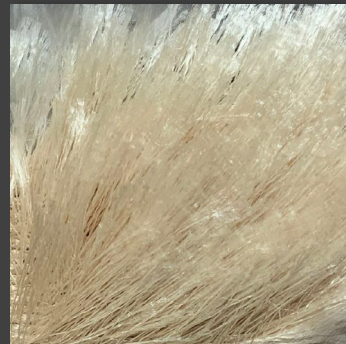
030TM
TOUCH ME



056TM
TOUCH ME



129TM
TOUCH ME



029TM
TOUCH ME

TOUCH ME - SHORT PILE Teppich



055TM
TOUCH ME



133TM
TOUCH ME



095TM
TOUCH ME



040TM
TOUCH ME



081TM
TOUCH ME



091TM
TOUCH ME



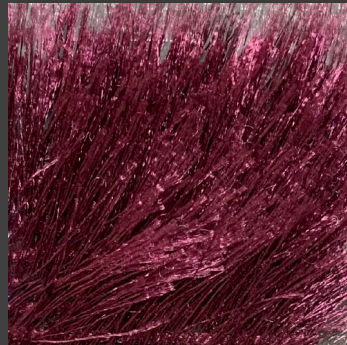
132TM
TOUCH ME



094TM
TOUCH ME



038TM
TOUCH ME



117TM
TOUCH ME



080TM
TOUCH ME



131TM
TOUCH ME



051TM
TOUCH ME



009TM
TOUCH ME



078TM
TOUCH ME

TOUCH ME - SHORT PILE Teppich



171TM
TOUCH ME



170TM
TOUCH ME



088TM
TOUCH ME



100TM
TOUCH ME



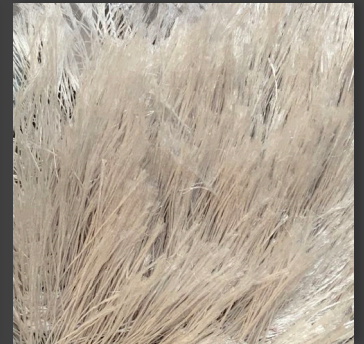
125TM
TOUCH ME



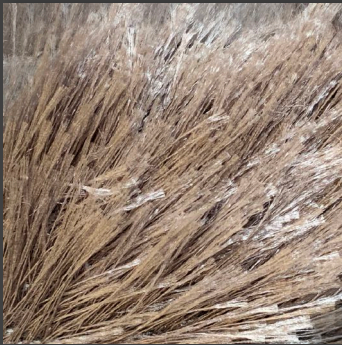
067TM
TOUCH ME



169TM
TOUCH ME



024TM
TOUCH ME



037TM
TOUCH ME



135TM
TOUCH ME



082TM
TOUCH ME



168TM
TOUCH ME



015TM
TOUCH ME



013TM
TOUCH ME



014TM
TOUCH ME

TOUCH ME - SHORT PILE Teppich

MATERIAL

82% Polyester + 18% Wool
Florlänge ca. 30 mm
Gewicht ca. 4,2 KG / qm
Maßtoleranz plus/minus 2%
Florhöhentoleranz plus/minus 1%
Farbabweichung Toleranz plus/minus 5%

Ausschlaggebend für die mögliche Ausführung des entsprechenden Produktes, ist die jeweils aktuell gültige CHRISTINE KRÖNCKE Preisliste. The binding factor for the material availability, for any product, is the currently valid CHRISTINE KRÖNCKE price-list.

Übersichtsfotos der Originalmuster der Teppich Manufaktur Blatt 1 - 5

